



# Business continuity made easy

## Easy UPS 3-phase

**Easy UPS 3S:**  
208/220V

**Easy UPS 3M:**  
200/208/220V



[se.com/ups](https://se.com/ups)

Life Is On

**Schneider**  
Electric

# Business continuity made easy

The Schneider Electric Easy UPS 3-phase ranges are easy-to-install, easy-to-connect, easy-to-use, and easy-to-service 10-100 kVA UPSs ideal for small and medium businesses, commercial buildings, non-IT, and light industrial applications.

The Easy UPS 3-phase ranges bring predictability to utility costs by delivering up to 94% efficiency in double conversion mode and up to 98% efficiency in energy-saving ECO mode, thanks to advanced product features, competitive specifications, and robust electrical design. These UPSs are exceptionally easy to install, connect, operate, maintain, and service, making them ideal for a wide range of small and medium business applications. The EcoStruxure™ connected UPSs feature a wide operating temperature range and strong overload protection, all in a compact and lightweight footprint. Start-up service\* optimizes your system's performance, quality, and safety. The Easy UPS 3-phase ranges are the easy choice for your business continuity in the electrical room.

## The Easy UPS 3-phase ranges

### Easy UPS 3S

- 10-40 kVA UPS for internal batteries

### Easy UPS 3M

- 50-100 kVA UPS for external batteries

### Typical applications

- Non-IT and light industrial applications
- Manufacturing facilities
- Telecommunication
- Commercial buildings
- Healthcare
- Transportation

### Easy to install and start up

- Rolls into position quickly and easily
- Minimal footprint requirement with lightweight, compact form factor
- Straightforward installation
- Input, output, and bypass breakers are included
- Emergency Power Off (EPO) switch is included
- Easy Loop test verifies UPS performance before you connect your load, without the need for a load bank
- Aesthetic design blends well into your installation environment
- On-site start-up\* with Schneider Electric Field Service Representatives

\*Included with Easy UPS 3M; included for Easy UPS 3S 208V in most regions. Contact your local Schneider Electric representative for availability.



50 kVA Easy UPS 3M  
for external batteries

40 kVA Easy UPS 3S  
for internal batteries

## Easy to use, connect, monitor, and manage

- User-friendly display interface supports easy configuration
- The optional network card enables:
  - Monitoring of UPS status remotely through a Web interface
  - Monitoring and management of the UPS status and performance through EcoStruxure IT's cloud-based and on-premise software suites, bringing you peace of mind

## Easy to maintain

- Front and rear access for service
- Quickly and easily replace the dust filter conveniently located behind the front door
- Schneider Electric service team available to make service easy and improve uptime with proper maintenance of your UPS and batteries

## Easy to expand

- Parallel UPSs for capacity or redundancy:
  - Easy UPS 3S: Up to four UPSs
  - Easy UPS 3M: Up to six UPSs

## Versatile

The Easy UPS 3-phase ranges are easy to adapt for your site requirements:

- Only pay for the options you need, with upgrade kits that enhance the resilience of the UPS
- Internal, external, and third-party battery options
- Common battery bank (Easy UPS 3M): Redundant UPSs can share the same battery bank, reducing battery costs
- Extended runtime with battery cabinets

## Robust and competitive

- The Easy UPS 3-phase ranges bring predictability to utility costs:
  - Up to 94% efficiency in double conversion mode
  - Up to 98% efficiency in ECO mode
- Minimize your power losses and cooling requirements with up to unity power factor (kW=kVA)
- Protect your data center or electrical room with these fortifying features:
  - Embedded dust filter
  - Conformal coating
  - Operating temperature up to 40°C
  - Wide input voltage range

## Proven performance

With an established customer base of over 120,000 satisfied customers, we have been providing business continuity around the world for more than 30 years.

The Easy UPS 3-phase ranges are the easy-to-choose, easy-to-use power protection solution for today's connected businesses.

## Options

- Modular battery cabinet
- Modular battery string
- Parallel maintenance bypass panel
- Network card
- Cold start kit
- Parallel kit

### Easy UPS 3S 208V only:

- Dry contact card
- Single unit maintenance bypass panel
- Kirk key kit for Easy UPS 3S 208V maintenance bypass panel

### Easy UPS 3M only:

- Battery breaker box
- Battery breaker kit
- Empty classic battery cabinet
- Classic battery cabinet with batteries
- Cable kit for adjacent installation of classic battery cabinet

Over

# 120,000

satisfied customers



Network card



Modular high-capacity battery string



Parallel maintenance bypass panel



Empty battery cabinet for battery installation on-site



Modular battery cabinet for extended runtime requirements (compatible with Easy UPS 3S)



Classic battery cabinet with factory installed long-life batteries, for quick and easy installation on-site (compatible with Easy UPS 3M)

Easy UPS 3S 10-40 kVA  
for internal batteries



Easy UPS 3S  
10-20 kVA UPS for  
internal batteries

- Dimensions (H×W×D):  
10-20 kVA:  
1400x380x928 mm  
30 kVA:  
1400x380x1050 mm
- Batteries: VRLA –  
internal modular  
battery strings
- IP level: IP 20

Easy UPS 3S  
40 kVA UPS for  
internal batteries

- Dimensions (H×W×D): 1400x  
500x1092 mm
- Batteries: VRLA –  
internal modular  
battery strings
- IP level: IP 20

Easy UPS 3M 50-100 kVA  
for external batteries



Easy UPS 3M  
50 kVA UPS for  
external batteries

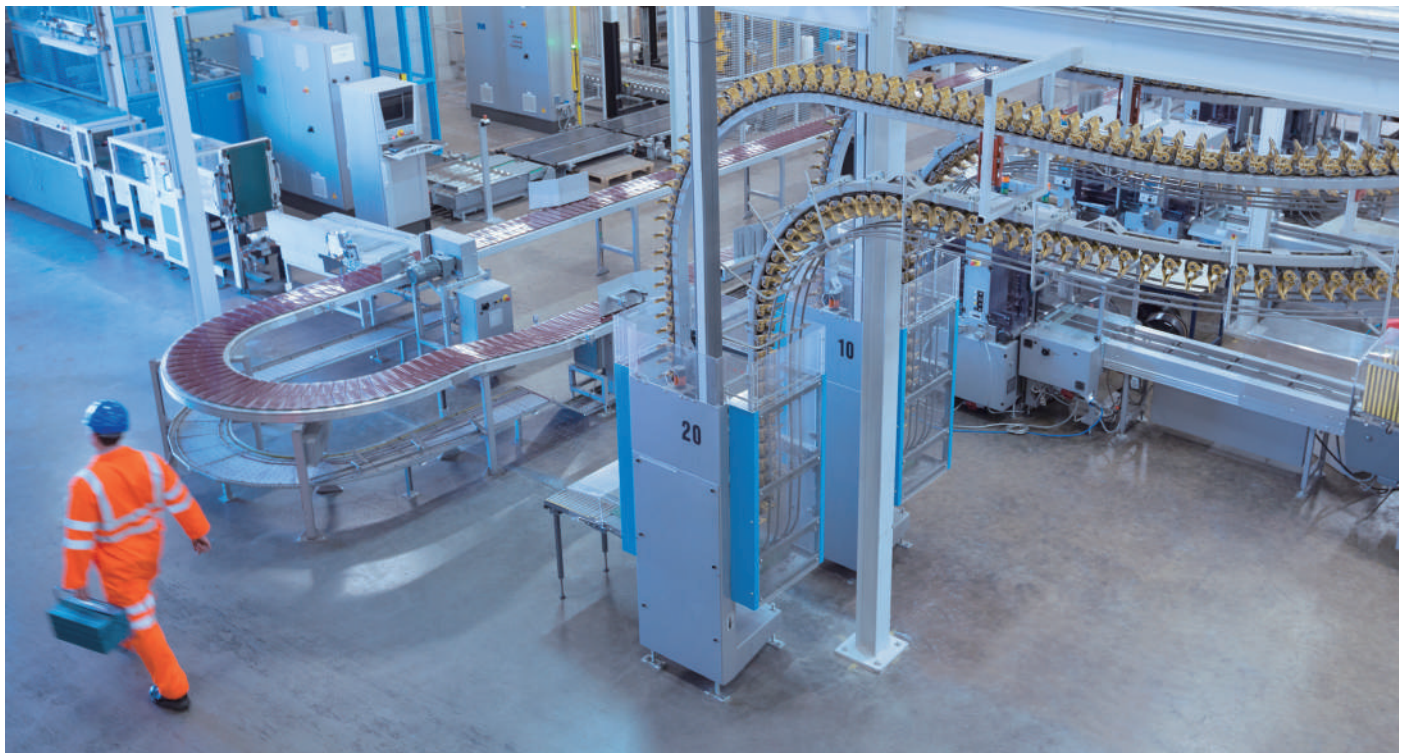
- Dimensions (H×W×D):  
915×360×850 mm
- Batteries: VRLA –  
external classic  
battery cabinet
- IP level: IP 20

Easy UPS 3M  
60-80 kVA UPS for  
external batteries

- Dimensions (H×W×D):  
1300×500×850 mm
- Batteries: VRLA –  
external classic  
battery cabinet
- IP level: IP 20

Easy UPS 3M  
100 kVA UPS for  
external batteries

- Dimensions (H×W×D):  
1300×600×850 mm
- Batteries: VRLA –  
external classic  
battery cabinet
- IP level: IP 20



# Visibility and peace of mind

When you purchase the network card, you can manage and monitor your Easy UPS 3-phase UPS from anywhere, at any time, on any device, thanks to EcoStruxure IT software and services.

When you purchase the Network Card, EcoStruxure leverages advancements in IoT, mobility, sensing, cloud, analytics, and cybersecurity to deliver innovation at every level. EcoStruxure IT Expert and EcoStruxure Asset Advisor are cloud-based solutions that provide you with enhanced visibility and data-driven insights to optimize data center resiliency and performance.

When it comes to IT critical equipment monitoring, are you more hands-on or hands-off?



## Visibility anywhere, anytime

EcoStruxure IT Expert provides you a hands-on approach with vendor-agnostic, cloud-based monitoring software that synthesizes performance and alert data into proactive recommendations and enables wherever-you-go visibility from any device. Try it free for 30 days: [www.ecostruxureit.com/ecostruxure-it-expert/#trial](http://www.ecostruxureit.com/ecostruxure-it-expert/#trial)



## 24/7 remote monitoring and troubleshooting

EcoStruxure Asset Advisor\* for secure power and cooling provides a hands-off approach with 24/7 remote monitoring service by the Schneider Electric service bureau engineers. We monitor and troubleshoot while you relax.

\*Country dependent. Contact your local representative for availability. Subject to terms and conditions.

## Comprehensive on-site service options

### Provides optimal system lifetime

#### Start-up service\*\*

- Commission the installation in accordance with manufacturer's recommendations. Ensure optimal system performance from Day 1.

#### Schneider Electric-certified installation services

- Expert configuration of your equipment for optimal performance and reliability.

#### Maintenance services

- Ensure proper care of your mission-critical applications.
- Preventive maintenance and response time upgrades, where available.

#### Flexible service plans / on-site extended warranty

- Hassle-free system maintenance.
- Improve uptime at a predictable cost.

\*\*Included with Easy UPS 3M; included for Easy UPS 3S 208V in most regions. Contact your local Schneider Electric representative for availability.

## Easy UPS 3S technical specifications

Rated Power (kVA/kW)					
	10/10	15/15	20/20	30/30	40/40
<b>Input</b>					
Input voltage (V)	208/220V (3-phase + neutral + ground)				
Frequency (Hz)	40-70 Hz				
Input power factor	>0.99				
THDI	≤4% at 100% linear load (symmetrical)				
Input voltage range	176-253 V				
Dual mains input	Yes (default: single mains input)				
<b>Output</b>					
Nominal output voltage (V)	208/220V				
Efficiency: Double conversion mode	Up to 94%				
Efficiency: ECO mode	Up to 98%				
Overload capacity in normal operation	125% for 10 minutes and 150% for 1 minute				
Output voltage tolerance	+/-1%				
<b>Communication and management</b>					
Communication interface	RS485, USB, dry contact, optional network card with Modbus TCP				
Control panel	Multi-function LCD, status and display console				
<b>Weights and dimensions</b>					
UPS for internal batteries, without batteries, unpackaged, shipping dimensions (H x W x D, mm)	1400 x 380 x 960 mm / 1595 x 800 x 1200 mm	1400 x 380 x 960 mm / 1595 x 800 x 1200 mm	1400 x 380 x 960 mm / 1595 x 800 x 1200 mm	1400 x 380 x 1050 mm / 1595 x 800 x 1200 mm	1400 x 500 x 1092 mm / 1595 x 800 x 1200 mm
UPS for internal batteries, without batteries, unpackaged/shipping weight (kg)	120/152	132/165	132/165	155/188	187/220
Battery string (1 string/2 modules), unpackaged/shipping weight (kg)	27 kg per module				
<b>Regulatory</b>					
Safety	UL 1778:2014 5th Edition, CSA C22.2 No. 107.3-14		Performance	IEC 62040-3	
EMC/EMI/RFI	FCC Part15 Subpart B / ANSI C63.4 2014		Environmental	IEC 62040-4	
Markings	cTUVus, FCC				
<b>Battery type</b>					
Battery type	VRLA				
Nominal DC bus (100% load)	Nominal DC bus: +/- 120 Vdc				
Charging power in % of output power (selectable)	1-15%				
<b>Environmental</b>					
Operating temperature	0°C to 40°C				
Relative humidity	0 to 95% non-condensing				
Operating elevation	0 to 1,000 m at 100% load				
Audible noise at 1 m from unit	10 kVA: ≤65 dBA at 100% load; 15-30 kVA: ≤68 dBA at 100% load; 40 kVA: ≤70 dBA at 100% load				
Protection class	IP20				
Warranty*	One year with Schneider Electric-certified Field Service Representative Start-up Service*				

\*Included with Easy UPS 3M; included for Easy UPS 3S 208V in most regions. Contact your local Schneider Electric representative for availability.

## Easy UPS 3M technical specifications

Rated Power (kVA/kW)	50/50	60/60	80/80	100/100
<b>Input</b>				
Input voltage (V)	200/208/220V (3-phase + neutral + ground)			
Frequency (Hz)	40–70 Hz			
Input power factor	>0.99			
THDI	<3% at full linear load			
Input voltage range	180 to 272 V at full load at 40°C			
Dual mains input	Yes (default: single mains input)			
<b>Output</b>				
Nominal output voltage (V)	200/208/220 V			
Efficiency: Double conversion mode	Up to 93.5%			
Efficiency: ECO mode	Up to 98%			
Overload capacity in normal operation	110% for 60 minutes, 125% for 10 minutes, 150% for 1 minute			
Output voltage tolerance	+/-1%			
<b>Communication and management</b>				
Communication interface	RS485, USB, Dry contact, Modbus TCP/IP (optional network card)			
Control panel	Five inch touchscreen LCD, status, and display console			
<b>Weights and dimensions</b>				
UPS for external batteries, unpackaged/ shipping dimensions (H × W × D, mm)	915 x 360 x 850 mm / 1140 x 475 x 965 mm	1300 x 500 x 850 mm / 1500 x 625 x 975 mm	1300 x 500 x 850 mm / 1500 x 625 x 975 mm	1300 x 600 x 850 mm / 1500 x 725 x 975 mm
UPS for external batteries, unpackaged/shipping, weights (kg)	145/169	193/223	227 / 257	304/338
<b>Regulatory</b>				
Safety	IEC/EN 62040-1		Performance	IEC62040-3
EMC/EMI/RFI	IEC 62040-2		Environmental	IEC 62040-4
Markings	CE			
<b>Battery type</b>				
Battery type	VRLA			
Nominal DC Bus (100% load)	+/- 192 to +/-240 Vdc			
Charging power in % of output power (selectable)	for external batteries: 1-38.4%	for external batteries: 1-32%	for external batteries: 1-36%	for external batteries: 1-38.4%
<b>Environmental</b>				
Operating temperature	0 to 40°C			
Relative humidity	0 to 95% non-condensing			
Operating elevation	0 to 1,500 m at 100% load			
Audible noise at 1 m from unit*	50 kVA: 65 dBA at 100% load; 60-100kVA: <70dBA at 100% load			
Protection class	IP20			

\*Under 30°C

\*\*126-180 V with a linear derating of the load to 30%

Life Is On



To learn more about the Easy UPS 3-phase uninterruptible power supplies, EcoStruxure IT cloud-based DCIM, and EcoStruxure Asset Advisor 24x7 Digital Monitoring Services, contact your Schneider Electric representative or visit [se.com/ups](https://www.se.com/ups)

**About Schneider Electric** At Schneider Electric, we believe access to energy and digital is a basic human right. We empower all to make the most of their energy and resources, ensuring Life Is On everywhere, for everyone, at every moment. We provide energy and automation digital solutions for efficiency and sustainability. We combine world-leading energy technologies, real-time automation, software and services into integrated solutions for Homes, Buildings, Data Centers, Infrastructure and Industries. We are committed to unleash the infinite possibilities of an open, global, innovative community that is passionate about our Meaningful Purpose, Inclusive and Empowered values. [www.se.com](https://www.se.com)

**Schneider Electric SE**

800 Federal Street  
Andover, MA 01810, USA  
[www.se.com](https://www.se.com)

March 2021

©2021 Schneider Electric. All Rights Reserved. Life Is On Schneider Electric is a trademark and the property of Schneider Electric SE, its subsidiaries and affiliated companies. All other trademarks are the property of their respective owners.

998-21202068\_LMA\_SA